



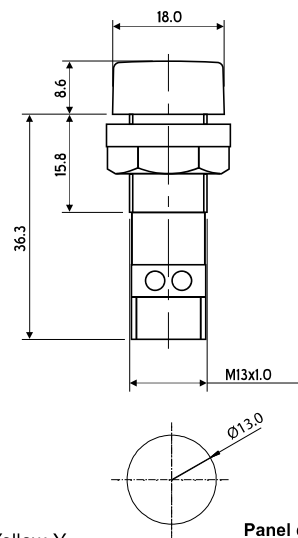
LED MODULE PILOT LIGHTS

LM13 - SERIES

- Characteristics
- Excellent illumination
 - Long life, 1,00,000 hours
 - Low current consumption
 - Incorporate solid-state devices
 - Shock proof and vibration resistant
 - Modular in construction
 - Fine serrated lens
 - Compact in size and can be directly connected across 220V AC supply
 - Available in Red, Green, Amber, Blue and White colour lens with diffuser
 - Touch-proof terminals with captive screws (IP20 protection)

Ordering code Voltage

LM13()D 12V AC	12V AC
LM13()D 24V AC	24V AC
LM13()D 48V AC	48V AC
LM13()D 110V AC	110V AC
LM13()D 220V AC	220V AC
LM13()D 12V DC	12V DC
LM13()D 24V DC	24V DC
LM13()D 48V DC	48V DC
LM13()D 110V DC	110V DC
LM13()D 220V DC	220V DC



() Colour : Red - R, Green - G, White - W, Amber - A, Blue - B, Yellow - Y

TECHNICAL DATA

Current	10mA to 15mA (voltage dependant)
Voltage	12, 24, 48, 110, 220V AC 12, 24, 48, 110, 220V DC
Voltage variation	±20% of operating voltage
Insulation resistance	> 500 Mohms
Dielectric test voltage	2.5 KV AC for 1 minute
Illuminated method	Light emitting diodes controlled by electronic circuitry
Ambient temperature	-25°C to +75°C
Available colour	Red, Amber, Green, Blue and White
Material	Thermoplastic with polycarbonate lens
Terminal	Touch-proof terminals with M2.5 captive screws
Cut-out required	13.2 mm. dia
Ingress protection	IP20 (rear), IP65 (front)

Note : Adaptor plate suitable for 14.5 mm. cutout is also available, ordering code is **AD14**

All dimensions are in mm.

Due to continuous improvement in products, we reserve the right to alter specifications without prior notice